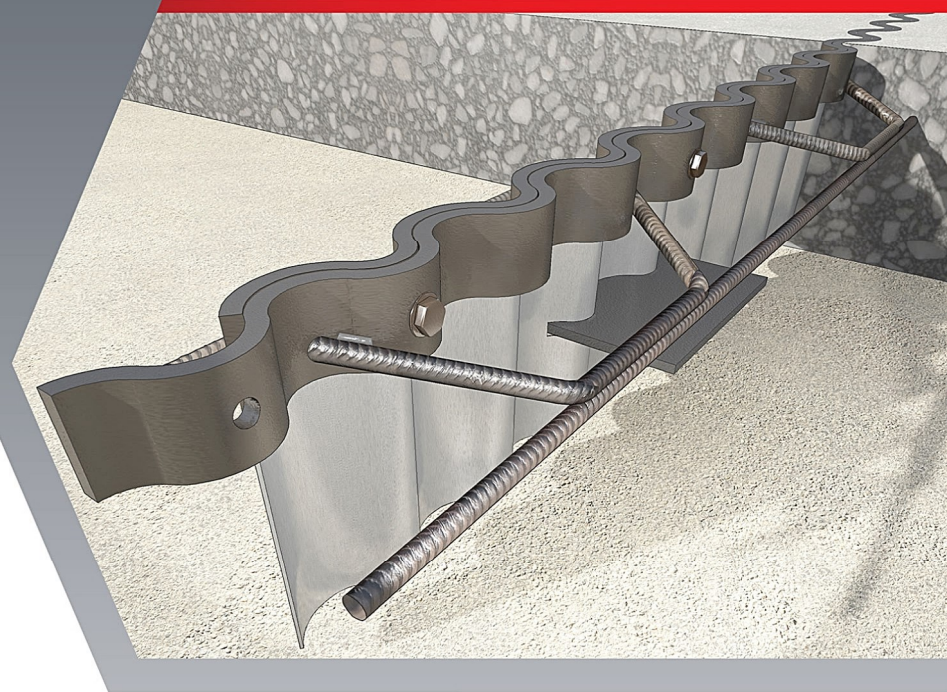


SINUS JOINT

UNSURPASSED JOINT ARMOURING



ADVANTAGES

- Disruptive face reduces impact
- Smooth transition of the wheel across the joint
- Jointless effect - Wheel life increased
- Allows greater flexibility for future building use
- The wheel can't drop into the joint gap due to disruptive edge
- Reduced joint impact will result in the floor's lifetime increase
- High tensile steel plate dowels provide uniform load transfer & maximum bearing capacity
- Top strips are made from 6mm thick steel

FlorCon Rus

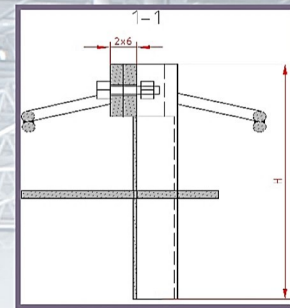
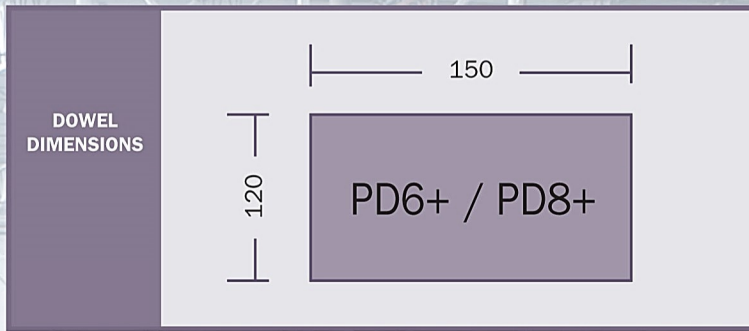
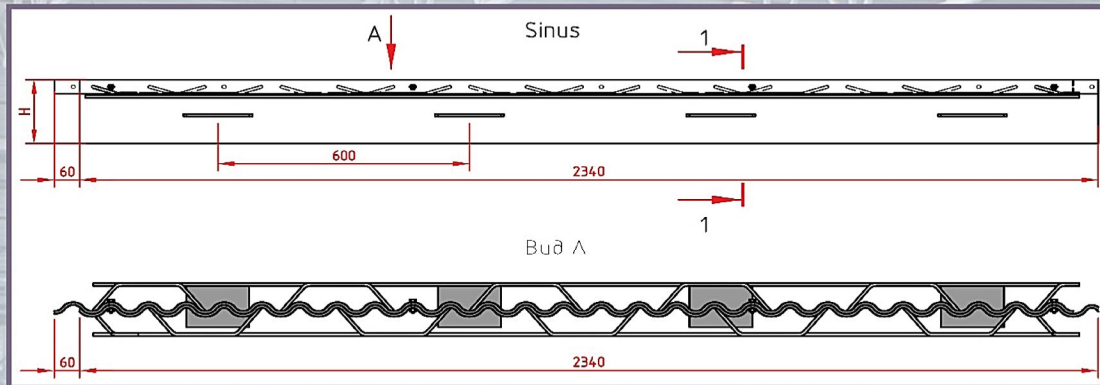
FLOOR INNOVATIONS

125424, Moscow,
Volokolamskoe highway, 71/2, of. 685
www.florcon.com
joint@florcon.ru
tel.: +7 495 134 00 60



Technical Report 34
**CONCRETE INDUSTRIAL
GROUND FLOORS**
A guide to design and construction

COMPLIANT WITH TR34



Dowel bearing capacity and load transfer (in accordance with TR34 4-th edition)

For typical concrete slabs, C25/30 concrete grade, joint opening up to 20mm (calculations for unreinforced slab); modulus of subgrade reaction $k_s=0,03 H/mm^3$		Bursting, kN		Bending, kN		Max. calculated load transfer within the effective length $2 \times 0,9 \times L^*$	
Slab depth	Dowel type	Dowel	Running meter	Dowel	Running meter	$2 \times 0,9 \times L$, m	kN
150mm	PD6+	19,2	32,0	44,3	74,0	1,335	43
	PD8+	19,2	32,0	69,8	116,3	1,335	43
200mm	PD6+	31,5	52,5	44,3	74,0	1,657	87
	PD8+	31,5	52,5	69,8	116,3	1,657	87
250mm	PD6+	35,4	58,9	44,3	74,0	1,959	115
	PD8+	35,4	58,9	69,8	116,3	1,959	115
300mm	PD6+	37,6	62,7	44,3	74,0	2,245	140
	PD8+	37,6	62,7	69,8	116,3	2,245	140
350mm	PD6+	42,1	70,2	44,3	74,0	2,521	177
	PD8+	42,1	70,2	69,8	116,3	2,521	177

* – effective length of the joint participating in load transfer across the joint is $2 \times 0,9 \times L$ (for the case of a single point load at the joint edge), where L – radius of relative stiffness depends on slab depth, modulus of subgrade reaction k_s , concrete strength grade.

This table shows the load at failure in bursting (failure of the concrete) and bending (failure of the dowel) for a joint opening of 20mm. Larger joint openings can be accommodated. The ultimate load has been calculated in accordance with TR34 4-th Edition. For more detailed analysis please contact FlorCon Rus.